

# St Martin-by-Looe



# News



## Autumn 2025

Published and funded by  
St Martin by Looe Parish Council.

*Delivered FREE throughout the Parish and  
published in colour online.*



[clerk@stmartinbylooe.org.uk](mailto:clerk@stmartinbylooe.org.uk)

[www.stmartinbylooe-pc.gov.uk](http://www.stmartinbylooe-pc.gov.uk)

# **St Martin By Looe Parish Councillors Contact Numbers.**



Chairman Robert Henly 01503 240336

Vice Chairman Roberta Powley 01503 240650

Parish Councillors Barbara Reynolds 01503 240520

David Keeble 01503 263525

Paul Matthews 07724 115620

Simon Lawes 07399 605069

Louise Western 07789 558191

Parish Clerk & Magazine Editor Charles Hyde 07763 364809  
[clerk@stmartinbylooepec.org.uk](mailto:clerk@stmartinbylooepec.org.uk)

County Councillor Mark Gibbons 07342 530644

[Cllr.mark.gibbons@cornwall.gov.uk](mailto:Cllr.mark.gibbons@cornwall.gov.uk)

If you would like to include an advertisement in the next edition please contact The Clerk, Charles Hyde on 07763 364809 or by email [clerk@stmartinbylooepec.org.uk](mailto:clerk@stmartinbylooepec.org.uk) Costs: £20 for a full page, £10 for a ½ page, £5 for 1/3 page: Contract discounts are available. The magazine is printed quarterly and has a circulation of 350 printed copies delivered throughout the Parish and is also available online on our website and Facebook page.

## **Contributions**

We always welcome contributions from people living in the Parish. If you would like to air your views on a particular subject or have a photograph or piece of artwork for the front cover please get in touch with The Clerk.

## **Statutory Disclaimer**

All articles and advertisements are published in good faith, St Martin By Looe Parish Council cannot check all details in the articles and any views expressed may not necessarily reflect those of the Parish Council. Neither can we be held responsible for the actions of any advertisers now or in the future.



## Parish Council Update



### Welcome to the Autumn Edition

At the time of writing this we are experiencing another warm and dry spell, as worrying as the possibility of water shortages and a drought can be it is lovely to be able to spend time outside, enjoying our beautiful county. In this bumper issue you will find great articles by our regular contributors, and a report and photos from the Annual Produce Show in No Man's Land. I hope you enjoy reading this issue, and please mention the magazine when contacting the advertisers, they make this magazine possible.

### Millendreath Parking Issues

Some of you may have seen the front page coverage in the Cornish Times regarding the illegal parking on the double yellow lines in May Lane, hopefully the article, extra police patrols, and enforcement officers and the additional signage erected by Valley Resorts should help elevate the problems. Access for emergency vehicles and residents is vital and needs to be maintained.



## Group Travel

Day Trips & Coach Holidays

Enterprise Park, Midway Road, Bodmin, Cornwall PL31 2FQ Tel: 01208 77989

### Coach Excursions & Tours 2025

2nd September	Paradise Park, Hayle
<b>5th - 7th Sept</b>	<b>Burghley Horse Trials</b>
<b>21st - 25th Sept</b>	<b>Herefordshire &amp; Worcestershire</b>
8th October	Tavistock Goose Fair
10th October	Falmouth Oyster & Food Festival
1st November	Bridgwater Guy Fawkes Carnival
15th November	Longleat Festival of Light
<b>21st - 24th Nov</b>	<b>Turkey &amp; Tinsel - Weymouth</b>
29th November	Birmingham Christmas Market
5th December	Tavistock Dickensian Evening
13th December	Christmas Train of Lights, Dartmouth

Visit our website for all our excursions & tours.

Call: 01208 77989 for bookings and brochure  
website: [www.grouptravelcoachhire.co.uk](http://www.grouptravelcoachhire.co.uk)  
email: [grouptravelcornwall@gmail.com](mailto:grouptravelcornwall@gmail.com)

### Bodmin MOT Centre

**01208 77989**

Garage Services  
MOT Testing Station  
Classes 4, 5 & 7  
Servicing & Repairs  
High Vehicles & Motorhomes  
Brake Test & Headlight Alignment  
Pre MOT Inspections  
Annual & Interim Vehicle Servicing  
~  
Commercial interim inspections available  
including brakes and lights  
~  
Helping you stay compliant

Bodmin MOT Centre  
Enterprise Park, Midway Road,  
Bodmin, Cornwall PL31 2FQ



## Parish Council Update



### Planning Application

**Proposal:** Change of use application for the change from 'Holiday Accommodation' to permanent 'Domestic Accommodation' for residential use. **Location:** Brambles, Kellow, Looe, Cornwall.

### Polborder to Bucklawren — Dog fouling

Concerns have been raised by an increase in dog mess on the grass verges on the road to Bucklawren Farm, please clean up after your dog, there are dog waste bins throughout the parish which are kindly emptied by volunteers.

### Bus Services

Despite many attempts by the Parish Council, County Councillor and MP we have been unable to get the bus company to change their mind about the withdrawal of the 73 bus, they claimed lack of use and not being financially viable. The only alternative now is to take the bus to Looe and change to the rerouted 73 to Liskeard, however, we have been made aware that this service is very unreliable with connections regularly being missed, the Parish Council would like to ask bus users to record every time the service connection fails, so we can continue to lobby the bus company to restore services to St Martin by Looe Parish, please pass this information to a Parish Councillor or the Clerk



# K9 STYLE

## Pet Grooming

Jessica TamblynHayward

Qualified Pet Groomer

Bray Farm

Bindown

Nomansland, Near Looe

01503 240841 or

07834 473835





## Parish Council Update



**Please note new Website Address [stmartinbylooe-pc.gov.uk](http://stmartinbylooe-pc.gov.uk)**

### Parish Council Monthly Meetings

They take place at the Memorial Hall, No Man's Land at 7.30pm on the first Thursday of each month, but this may vary, so please check our noticeboards, social media or website for dates.

Requests to speak during Public Participation need to be made to the Clerk, 48 hours in advance by email: [clerk@stmartinbylooe-pc.org.uk](mailto:clerk@stmartinbylooe-pc.org.uk).

### Looe Banking Hub

Sardine Factory next to the Heritage centre  
West Looe,.

### Opening Hours/ Bank

Monday - **Natwest**

9am to 5pm

Tuesday - **Barclays**

9am to 5pm

Wednesday - **Lloyd's**

10am to 3pm

Thursday - **HSBC** 9am

to 1pm

Thursday - **Santander**

1pm to 5pm

*Can obtain cash and pay money in any day. Any specific questions for your bank you'll need to speak to their advisor on the appropriate*

**SING ROCK**

**BRUNCH CLUB CHOIR**

**THE PUBLIC HALL LISKEARD**

**LAUNCHING IN MAY WEDNESDAYS FROM 10.30**

**FIRST FREE TASTER SESSION**

**VISIT [WWW.SINGROCK.CO.UK](http://WWW.SINGROCK.CO.UK) TO BOOK YOUR PLACE**  
**CONTACT SAMANTHA | 07977 166572 | [INFO@SINGROCK.CO.UK](mailto:INFO@SINGROCK.CO.UK)**

## No Man's Land Hall News

A letter of thanks was received from Vicki from Help for Heroes: [helpforheroes.org.uk](http://helpforheroes.org.uk). In the letter she explained how the charity was so important in helping her when she had to leave the army on health grounds, reading it makes us realise how much our veterans need the vital work Help for Heroes provides and how we, the public, can help by supporting this very important charity. The coffee morning held here at the Hall on V.E. day Thursday 8th May raised £222.00. for them. A cheque for £350.00, raised at our recent charity Jumble Sale, was presented to Mary for the charity Refuge4Pets.

This charity provides a specialist animal fostering service across Devon and Cornwall to victims/survivors of domestic abuse so they can leave with their much loved animals who, sadly, can be victims too. For more information please visit their website : [www.refuge4pets.org.uk](http://www.refuge4pets.org.uk).



Roberta presenting the cheque to Mary from  
Refuge4Pets

### **NO MAN'S LAND VILLAGE HALL** **HIRE THIS HALL**

**GROUPS 'PARTIES' CLUBS ETC**  
**GOOD SIZE HALL WITH KITCHEN**  
**& TOILET FACILITIES**

**A STAGE, BILLIARD/SNOOKER ROOM**  
**WITH A DARTBOARD**

**REASONABLE RATES**

**CONTACT MRS R. POWLEY 01503 240650**



## No Man's Land Hall News

On June 18th we held a Coffee Morning in which two members of the S.W. Ambulance Service Community Response Team gave a very informative talk and a demonstration on how to use the defibrillator at the Hall.

The Car Park will be closed from 9am Friday 26th September until 9am Saturday 27th September. Please ensure your vehicle has been removed from the Car Park by 8am Friday 26th September.

### Forthcoming Events:

**Harvest Festival** Saturday 18th October 2.30pm followed by a Faith Tea.

**Remembrance Sunday** Service 2pm 9th November followed by a Faith Tea.

**Christmas Fayre** Saturday 22nd November 2.30pm

**Christmas Bingo** Friday 12th December 7pm for 8pm.



**Robert bray**

**Window cleaner**

Gutters cleaned

Looe and surrounding areas

Tel. 07515431342

robertbray2471@gmail.com

Domestic and Commercial



## **HELP for YOU!**

**Would you benefit from a  
small grant  
towards Further Education?**

*Do you live in:*

**The Barbican? Sunrising? Plaidy?  
Millendreath? Nomansland?  
Hessenford (West)?  
Seaton (West)?**

**Enquiries and applications to:**

**St. Martin-by-Looe School Trust at  
[info@stmartinlooeschooltrust.org](mailto:info@stmartinlooeschooltrust.org)**

**or write to**

**Rev. Ben Morgan Lundie,  
The Rectory, St. Martin, LOOE PL13 1NX**

**closing date for applications –**

**Friday, September 26<sup>th</sup> 2025**



## No Man's Land Annual Produce Show 2nd August 2025



No Man's Land Village Hall was a riot of colour for our annual produce show. Judges were kept busy due to an increase in entries. The standard was high. In the afternoon visitors enjoyed cream teas and ice creams. Huge thanks to the judges, stewards, exhibitors and everyone who produced the refreshments.



## LOOE CHOIR WEDS EVES FROM 7PM AT THE FAMILY HUB





**VISIT [WWW.SINGROCK.CO.UK](http://WWW.SINGROCK.CO.UK) TO BOOK YOUR PLACE**  
**CONTACT SAMANTHA | 07977 166572 | [INFO@SINGROCK.CO.UK](mailto:INFO@SINGROCK.CO.UK)**

## No Man's Land Annual Produce Show 2nd August 2025



Some  
of the  
show  
entries



## Rob Stead Chimney Sweep

- ▣ Traditional & rotary power sweep
- ▣ Chimney unblocking
- ▣ Stove maintenance
- ▣ CCTV inspections & surveys
- ▣ Insurance company approved certificates issued
- ▣ Fully insured & trained by The National Association of Chimney Sweeps (NACS)

*CLEAN, TIDY & EFFICIENT SERVICE*

*CALL & BOOK YOUR LOCAL SWEEP TODAY!*

CALL US NOW

**07547 346 318**

**RS.ChimneySweep@gmail.com**

## No Man's Land

# Annual Produce Show 2nd August 2025



### Trophy winners were:

Marcus Julian,  
Jayne Gazur, Andrew  
Chudleigh, Teresa  
Weeks, Julia Smith,  
Andrea Deeley, Paul  
Matthews, Adele Conn,  
Careen Harris,  
Harry Lucking,  
Billy Bacon,  
Liz Pengelly,  
Morwenna Chudleigh,  
Kate Humphreys,  
Rob Young, Alex Brown  
and Charles Hyde.

*Much appreciation to Morwenna  
Chudleigh for organising this  
years Show, you did us proud.*

## PAINTING AND DECORATING



# BOWEN'S BRUSH AND BEYOND

## 07467930408

BOWENSBRUSHANDBEYOND  
.CO.UK

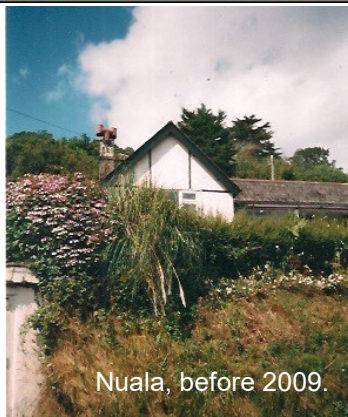


# World War Won!

**History Snippet by Jenny Wallis**

We've had a little peep back into our past! Ian Bromley was looking to enhance his family history. His Grandmother Elsie, a Jersey hotelier, escaped to Cornwall in 1940s. She was eventually housed at Nuala in Millendreath after a stay in Polperro. We were able to send a photo of the old Nuala which was demolished in 2009. It was owned by Violet Bale until 1972.

Wartime memories are rather scarce. Mutton's Cafe at Millendreath was requisitioned by the military and the Watch House became HQ for the Home Guard.



Nuala, before 2009.

Godfrey Gill in Plaidy published his Aunt Peggy's War Diary 1940 which is fascinating. From 23rd July to August 3rd 1940 the soldiers were making cement 'sugar loaves' across Millendreath Beach. - also referred to as 'dragons teeth'. This photo shows how they were incorporated in the sundeck of the sixties.

The Diary tells of a bomb falling 'east of Looe' in a strawberry field and of a Local Defence Volunteer hut at Murraytown.

Recent renovations at the Watch House unearthed a shower block and bath (with Ajax) walled up in the garden!

I know that hedges on the hilltop were flattened for an emergency landing strip and that plans were made to evacuate coastal areas in a "burnt earth" measure.

## **Angela Cornwall IFHB Therapist**

**I have been a practitioner for 30 years delivering support through holistic Therapies. I believe prevention is better than cure.**

**I offer:**

**Indian Head Massage  
Hot Stone Therapy  
Swedish Massage**

**Stress Management  
Anxiety strategies to manage  
stress and anxiety**

**I am Level 3 Advanced Level Health and Social Care.**

**A patient by experience for NHS ENGLAND COMMISSIONING.**

**Contact: 07897 784305**

**angela Cornwall 5@gmail.com**



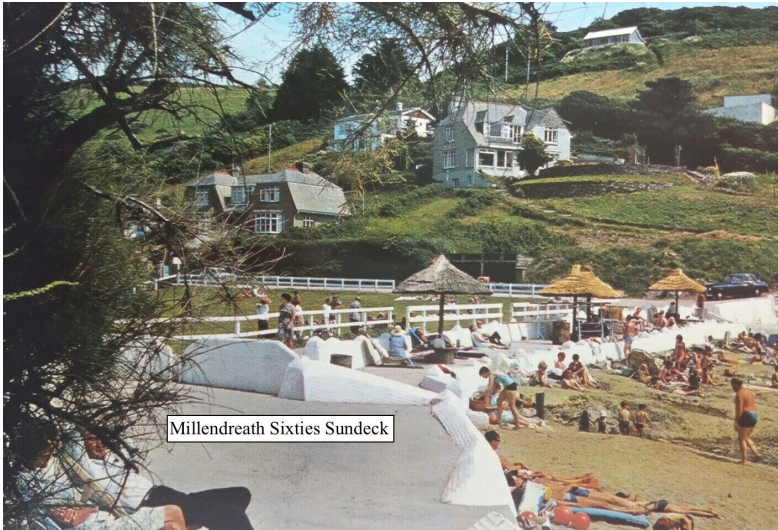
Angela  
Cornwall



bestyoucanbe

# World War Won!

History Snippet by Jenny Wallis



Millendreath Sixties Sundeck

The Parish Archives would be fertile ground for some insights. A parish memory would be a worthwhile project. I remember the barbed wire, anti-tank traps and black-out curtains. Risssoles and ration-books come to mind. I'm glad we won! But I grew up to be a pacifist! We need a military historian!

## PIANO & KEYBOARD TUITION IN LOOE

Lessons to suit all ages.  
You are never too young or  
old to learn.  
All styles including  
Classical, Pop, Rock &  
Blues.



**Contact Samantha on: 07977166572**

**Email: [Samantha.meades@ntlworld.com](mailto:Samantha.meades@ntlworld.com)**

**[www.pianokeyboardlessonslooe.co.uk](http://www.pianokeyboardlessonslooe.co.uk)**

# Pumpkin Pie

[www.bbcgoodfood.com](http://www.bbcgoodfood.com)

Fill a sweet shortcrust pastry tart case with lightly spiced squash to make a traditional American treat.

Serves 8

Prep time 40 mins

Cook time 1 hr 30 mins

(plus chilling).



## Ingredients

750g/1lb 10oz pumpkin or butternut squash, peeled, deseeded and cut into chunks

350g/12oz sweet shortcrust pastry  
plain flour for dusting

140g/5oz caster sugar

½ tsp salt

½ tsp fresh nutmeg grated

1 tsp cinnamon

2 eggs beaten

25g/1oz butter melted

175ml/6 fl oz milk

1 tbsp icing sugar

## Tredinnick Farm Shop and Cafe

Widegates, Near Looe, PL13 1QL. 01503 240992.



**Fresh Fruit & Veg,  
Bread, Meats, Pet Food,  
Beer, Wine & Spirits.**

**Plus ALL your  
everyday staples.**

**Agents for:  
The Lottery, Paypoint,**

**amazon** & **EVRI** EVRI NEW HOMES **dpd**  
**Services.**



**Open 7 days a week**

Mon—Sat 8am—6pm.

Sunday 9am - 5pm





# Pumpkin Pie

[www.bbcgoodfood.com](http://www.bbcgoodfood.com)

## Method

**Step 1.** Place the pumpkin in a large saucepan, cover with water and bring to the boil. Cover with a lid and simmer for 15 mins or until tender. Drain pumpkin; let cool.

**Step 2.** Heat oven to 180C/160C fan/gas 4. Roll out the pastry on a lightly floured surface and use it to line a 22cm loose-bottomed tart tin. Chill for 15 mins. Line the pastry with baking parchment and baking beans, then bake for 15 mins. Remove the beans and paper, and cook for a further 10 mins until the base is pale golden and biscuity. Remove from the oven and allow to cool slightly.

**Step 3.** Increase oven to 220C/200C fan/gas 7. Push the cooled pumpkin through a sieve into a large bowl or blend to a puree in a food processor. In a separate bowl, combine the sugar, salt, nutmeg and half the cinnamon. Mix in the beaten eggs, melted butter and milk, then add to the pumpkin purée and stir to combine. Pour into the tart shell and cook for 10 mins, then reduce the temperature to 180C/160C fan/gas 4. Continue to bake for 35-40 mins until the filling has just set.

**Step 4.** Leave to cool, then remove the pie from the tin. Mix the remaining cinnamon with the icing sugar and dust over the pie. Serve chilled.



**The Purely Cornish Farm Shop and Deli**  
*The Cornish Hamper people making  
beautiful bespoke hampers in Looe*

Established in 2005,  
We have Cornish products from over 30 Suppliers  
From Tarquins Gin and Camel Valley to Jo Downs Glass  
and St Eval Candles.

Open 7 days a week, 0900 1700hrs

18 Fore Street, East Looe, PL13 1DT

T: 01503 262680

[www.purelycornish.co.uk](http://www.purelycornish.co.uk)

[ally@purelycornish.co.uk](mailto:ally@purelycornish.co.uk)

# Welcome to THE BARN

INDOOR POOL, SAUNA & STEAM ROOM



OPEN TO  
VISITORS  
AND LOCALS

## *Spa-Style Relaxation* at Tregoad Holiday Park near Looe

With breathtaking views of Looe Island and Millendreath Valley, our luxury indoor pool, sauna and steam room provides a perfect day retreat for the whole family.



St Martin, Looe, PL13 1PB

**Tregoad**  
HOLIDAY PARK  
\*\*\*\*\*

Call 01503 262718 to book

## **Autumn Community Meals & Events**

**In St Martins Church Hall.**

**Saturday 27th September 12.2pm.**

***Community Meal — Quiche & Salads.***

**Saturday 25th October 12-2pm**

***Community Meal — Baked Potato, cheese and beans.***

**Saturday 22nd November 12-3pm**

***Christmas Community Meal 12-3pm.***

***Lunches, Teas, Stalls.***

**All Proceeds to St Martins and St Nicholas Churches, Looe.**

**Looe Locksmiths**

**Call 07739124163**

**[www.looelocksmiths.com](http://www.looelocksmiths.com)**

**Your Local Mobile Locksmith based in  
Looe**



**Key Cutting**

**Lock Replacement**

**Lock Opening**

**Vehicle Opening**

**Broken Key Extraction**

**UPVC/Composite Door Adjustment**

# SCOTT --- PARRY

## - ASSOCIATES -

**SELLING HOMES THAT FULFIL YOUR LIFESTYLE**

**COASTAL SOUTH EAST CORNWALL IS AN OFTEN OVERLOOKED PART OF THE CORNISH RIVIERA, KNOWN TO SOME AS "THE FORGOTTEN CORNER". COME AND DISCOVER YOUR FAVOURITE PART OF OUR WONDERFULLY IDYLIC COASTLINE.**

From the rugged and romantic moorland of Bodmin Moor and the verdant valleys of the Rivers Tamar and Fowey to the beautiful coastline of the Cornish Riviera, our experience and depth of knowledge provides clients and buyers alike with an estate agency experience which breaks with tradition, we provide candid opinion and fresh-faced enthusiasm for our property stock and our location.

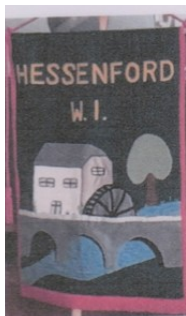
**[www.scottparry.co.uk](http://www.scottparry.co.uk)**

**01752 858314**

**[sales@scottparry.co.uk](mailto:sales@scottparry.co.uk)**

**[@scott parry associates](#)**

## Hessenford Women's Institute



**Hessenford WI**

**Enjoyable**

**Safe**

**Sociable**

**Educational**

**Neighbourly**

**Fun**

**Open-minded**

**Recreational**

**Delicious** (well the refreshments are)

**Welcoming**

We are Hessenford WI and we are a friendly women's group who are always happy to meet visitors. We meet at Widegates Village Hall on the first Tuesday of each month at 2pm. We would love to meet you. Please come and meet us.



## STEVE WILLS HAULAGE

We can supply Dumpy Bags /25kg bags of

**Decorative Chippings**

**Sand and aggregates**

**Cement and Blocks**

**Tipper & Grab Hire**

**Delivery or collection available**

**Fast and efficient service**

# The Famous Five

By Dave Keeble

Those of you who read the Summer edition of the Parish Magazine may recall that my main story was about a pair of Carrion Crows who had nested in a tree in my garden. The story up until then was that the three chicks had hatched and the parent birds were busy every minute of the



the day keeping them fed. Now, to continue with the developments of that time, as the days passed the chicks were very visible, especially when being fed. All three would perch on the side of the nest and vigorously flap their wings – space in the nest was now obviously at a premium.

I didn't see the precise moment that the fledglings left the nest but they remained close to it for a couple of weeks, during which time the parent birds could be seen taking food to different locations in the trees.

The female bird was a consistent visitor to the garden, pouching as much food as she could manage, she would then drink from the bird

**Tel 07515431342**



**ROBERT'S GUTTER CLEANING SERVICE**

*34 years experience*

**ROBERT BRAY**

[robertbray2471@gmail.com](mailto:robertbray2471@gmail.com)

LOOE | SHUTTA



# The Famous Five

By Dave Keeble

bath and then fly the short distance to feed the young. The male bird would also take food to the fledglings but spent an increasing amount of time perched in a dead Elm keeping an eye out for passing dangers in the form of birds of prey. He also would take flight to remove other Corvids from the area, including a Raven that just happened to venture too close. On one occasion both male and female birds took flight to remove a Buzzard that may have possibly noticed the young Crows. The ariel dogfight lasted for several minutes until the pair eventually escorted the Buzzard down in to the Millendreath valley and then returned to parental duties. Watching these birds going about their daily routine was fascinating and I would take every opportunity to do so.

I knew the time would come when the whole family would break cover and come to feed, and in the middle of June all five birds came for the first time just yards from the back door. At this stage the young birds were not feeding themselves and still relied on the parent birds who responded to the constant squawking and wing flapping from all three



# The Famous Five

By Dave Keeble

fledglings. Day after day the birds were being shown how to feed from the ground until eventually they began to get the majority of their food themselves, which was very fortunate as on one particular day the female arrived with an injured leg. She was just able to hop on the ground but unable to perch on the side of the bird bath – I was very concerned as to what the outcome might be. Observations over the next few days saw the bird gradually getting some movement back and after about a week all was well and almost back to normal. Now, up to date all five birds visit the garden every day – sometimes only the young birds come but with the parents never far away. I do hope that the family continue to come to the garden as they are a delight to watch.

Another observation from the garden is that we seem to have more Bees this year than we have had for a long time. They seem to enjoy certain plants more than others - one in particular is a Salvia called 'Hot Lips'. It has brilliant scarlet and white flowers and can be grown in a pot or in borders. One other species that is attracting attention from the Bees is not so common – it is more often called the Chinese Lantern Tree – botanical name is Koeleruteria Bippinnata. I have had

## Professional Footcare Services

Happy Feet Foot Health

Tel: 07769605361

MOBILE & HOME VISITS

SHALLAN CARLOSS

FOOT HEALTH PRACTITIONER SC86199 DipRFHP S.A.C



### COMPLETE FOOTCARE TREATMENT

- Nail trimming & thick nails
- Corns
- Callous & hard skin
- Cracked heels
- Fungal nails
- Verruca
- Diabetics treated



Happy feet foot health



Happyfeetfoothealth23@gmail.com

Areas covered Rame peninsular, Looe, Pensilva  
and anywhere in between.

# The Famous Five

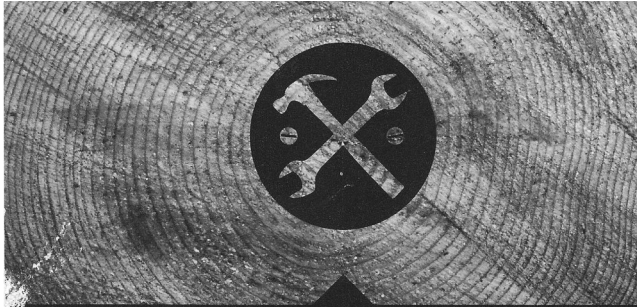
By Dave Keeble

the plant for many years – originally grown in a pot from a seed acquired from Kew Gardens by my mother in the late 80's. Now, planted in the ground it is thriving with both flowers and lanterns and it can, I understand, reach 30 – 40 feet in height.

On a less pleasant topic, the assumption I made about the rabbit disease, Myxomatosis, was probably correct as no sightings have been made for at least two months.

At the time of writing I am sure like many gardeners out there, I am hoping for some rain, just enough to fill the water butts and maybe stop a dreaded hose pipe ban.

David Keeble



## DJR Handyman Services

### Indoors

Hanging Pictures, Blinds, Curtains and Shelves,  
Flatpack Furniture Assembly, Minor Plumbing  
Work.

### Outdoors

Patio Pressure Washing, Grass Cutting, Hedge  
Trimming, Garden Clearance, Small Collections  
and Deliveries.

**Call - Darren Reynolds**  
**07800 579144**

**Email: [djrhandymanservices@gmail.com](mailto:djrhandymanservices@gmail.com)**

All work considered, no job too small. If you cannot  
see your job listed please make contact with your  
requirements for a free quote.





# Did you know that Looe has a library?

## Not a library member?

It's free to join, no ID needed, borrow up to 12 books for 3 weeks at a time

## Not sure what you want to read?

We can help, just give us an idea of what you'd like to read

## Don't think you have time to visit the library?

Browse the online catalogue, make a reservation and simply collect from the library

## We don't charge fees!

No late fees, No reservation fees!

## Can't get out due to illness or mobility issues?

We provide a fortnightly home delivery service



Pop in and see us!

Free parking opposite the library  
for library users



**Looe Library and Community Hub**  
**Millpool, West Looe PL13 2AF**

# Extract from an Old Map

(No idea of its age! Thanks to Caroline Petherick)



## THE CORNISH HOMESTEAD

Hand crafted soaps, salves, balms, lotions  
and more!

Telephone: 07503 072894

[www.cornishhomestead.com](http://www.cornishhomestead.com)

Facebook: cornishhomestead

## Useful Telephone Numbers

### Police

Looe Police Station 01503 266193  
Or 101 Emergency 999

### Coastguard (Emergency 999)

HM Falmouth 01326 310800  
Brixham 01803 884002

### Home Emergency

Gas 0800 371787  
Water 0800 169 1144  
Electricity 0800 111999  
Floodline 08459 881188

### Hospitals

Truro 01872 250000  
Liskeard 01579 335600  
Derriford 0845 1558155

### Doctors

Looe Surgery 01503 266960  
Liskeard. Oaktree 01579 335320  
Liskeard. Rosedean 01579 343133  
Quay Lane, St Germans &  
Downderry 01503 230088

### Councils

Cornwall 0300 1234 100  
Looe Town Council 01503 262255

### Buses

CityBus 01752 662271

### Airports

Exeter 01392 367433  
Newquay 01637 860600  
Bristol 0870 121 2747  
Heathrow 0871 472 5125  
Gatwick 0844 335 1802

### Railway

Enquiries 08457 484950

### Taxis

Looe Taxis 01503 262405  
Sarah's Taxis 01503 265688  
Liskeard, Anytime 01579 346007

### Vets

Looe, Calweton 01503 253773  
Liskeard Luxstowe 01579 342120  
Liskeard DJ Ellis 01579 342602



## R J REYNOLDS PLUMBING & HEATING LTD

**Phone 01503 240520**

**Mobile 07843565852**

All types of plumbing and heating,  
Oil, Natural gas LPG. lead work Underfloor  
heating, landlords certificates/ Gas safety  
checks, Boiler servicing.



1 Bucklawren Road, St Martins, Looe,  
Cornwall, PL13 1QS

